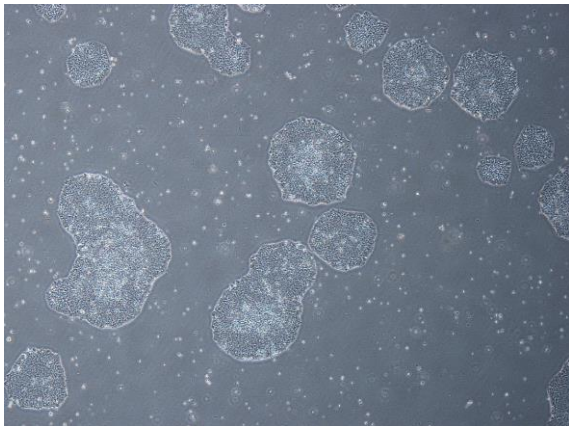
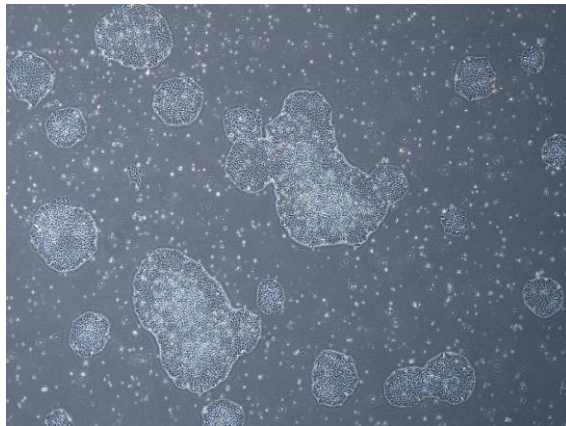


【 CiRA-j-1187 】 Morphology of iPSC colonies

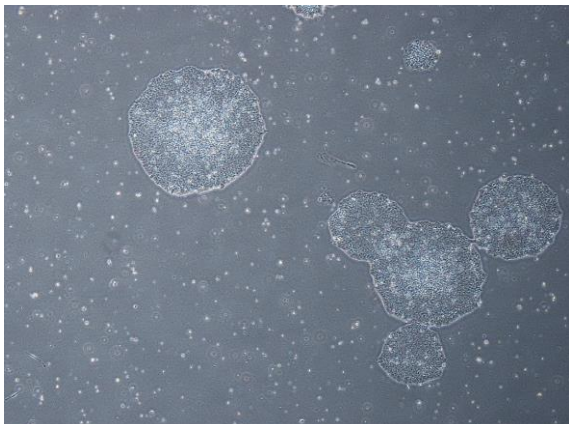
CiRA-j-1187-A: passage-2



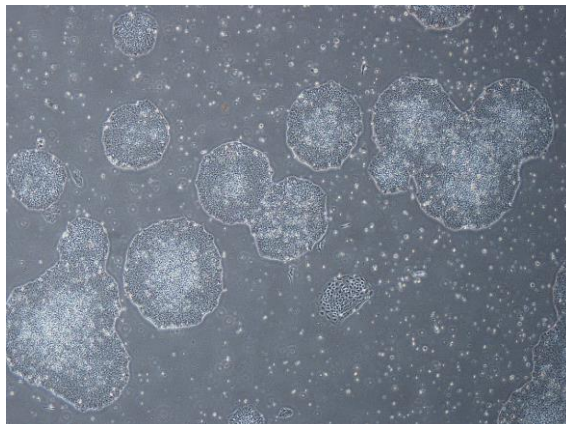
CiRA-j-1187-B: passage-2



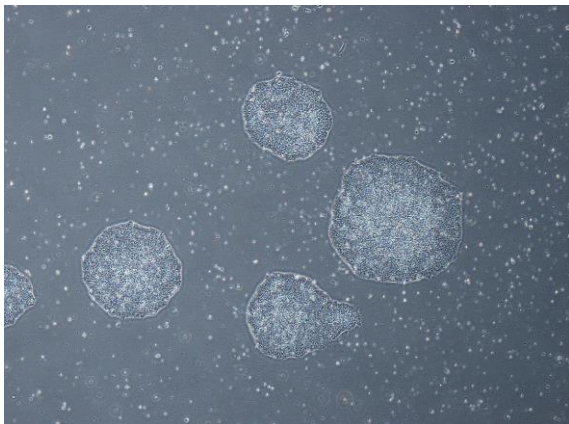
CiRA-j-1187-C: passage-2



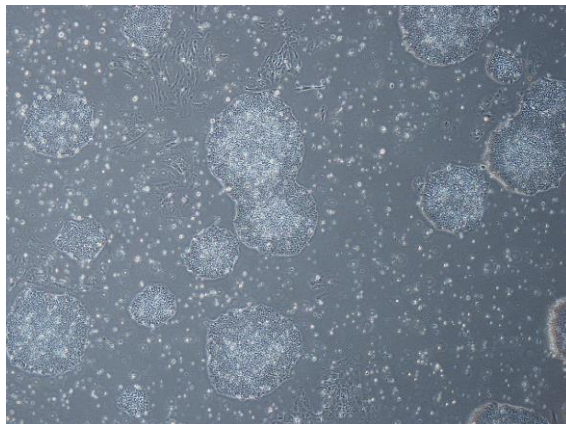
CiRA-j-1187-D: passage-2



CiRA-j-1187-E: passage-2



CiRA-j-1187-F: passage-2



(All images were captured at 4x magnification)